



# Enterprise Transmission

The Xytech Enterprise Transmission module facilitates the management of the entire transmission service delivery process. Individual transmission services can be set up that define a sequence of tasks, which can then be scheduled on an order. As orders need to be fulfilled, operators can manage all phases of events through a dynamic single-screen interface, before, during, and after the scheduled event.

**BENEFITS**

- ▶ **Manages the entire transmission service delivery process from quoting to scheduling to invoicing.**
- ▶ **Resource grouping and sequencing to assure proper scheduling of services.**
- ▶ **Transmission Operations application provides single-screen event management, before, during, and after the transmission.**

- ▶ **Templates package frequently used combinations of services together for effortless scheduling.**
- ▶ **Sophisticated conflict checking prevents errors and helps schedulers maximize the utilization of facilities and personnel.**
- ▶ **Quick holds let your people respond quickly to new service requests.**

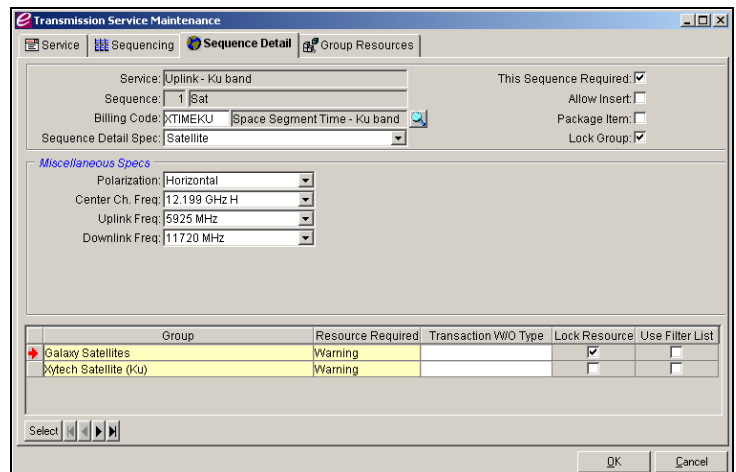
## Complete Transmission Management Covering the Entire Spectrum of Service Delivery

The Transmission module builds upon the already extensive rules-based scheduling, bidding, billing, and job costing functions available in Xytech Enterprise.

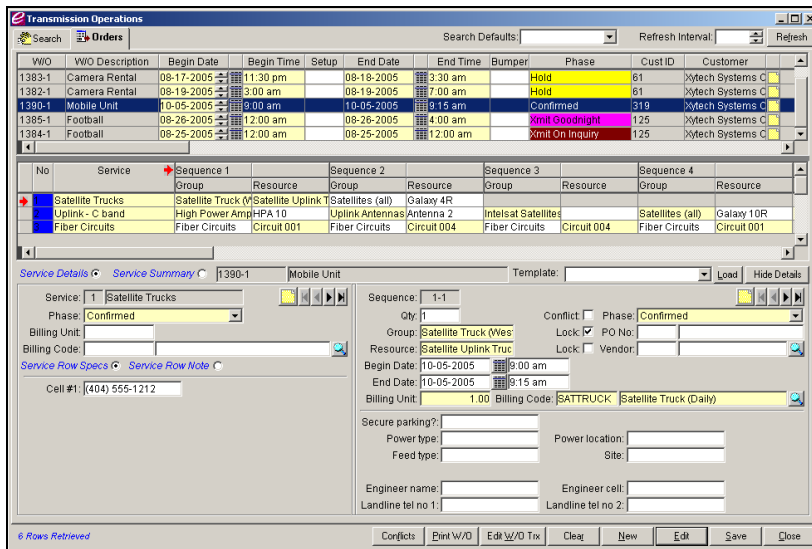
With the Transmission module, transmission facilities and network operations groups can use Xytech Enterprise to provide a price quote, automatically convert that quote to a service order, process the order, select the resources needed to deliver the service, schedule those resources to ensure availability, manage the service delivery process, alert staff in real time to any anomalies before they can interfere with service delivery, generate an invoice postdelivery, and provide the invoice data to the company's accounting systems.

## Services and Sequences are a Flexible Way to Manage Your Resources

The Transmission Service program delivers a flexible yet powerful capability that ensures services are booked using the proper facilities with all relevant technical requirements detailed. Resources are managed by assigning them to groups and then adding one or more groups to a transmission service. An unlimited number of transmission services can be configured. Each service represents the overall type of work to be performed (e.g., uplink), and can further have one or more sequences defined, which specify the groups and resources required to perform tasks as well as all the critical technical parameters (e.g., sequences could include: uplink antenna, space segment, encoder, exciter, HPA). Vendor information, technical specifications, and related service details can be loaded through user-defined spec templates or manual entry.



The resource scheduling features built into the system facilitate the significant reduction in the margin for human error, enable more efficient utilization of resources, and provide superior accountability for exactly how resources are employed.



## Transmission Operations Offers Single-Screen Event Management

The Transmission Operations application allows network operations centers to manage all phases of events through a single-screen interface, before, during, and after the scheduled event. Transmission order status is updated in real time and all relevant details are provided including dates and times, status (phase) routing information, service and resource specifications, vendor information, and extensive free-form notes. All aspects of existing transmission orders can be managed and new orders can be added. Once an order is complete, a single mouse click will “good night” it.

## Transmission Templates Make It Easy to Book Multiple Resources Quickly

You can create an unlimited number of Transmission Templates to save time when booking new orders. With a template, you can define frequently used services and their associated resources. By loading one or more templates on an order, you can quickly assign resources, manually making any additions or changes if necessary.

## Sophisticated Conflict Checking Helps Prevent Scheduling Problems

The Transmission module contains very sophisticated business logic that works behind the scenes to check conflicts and notify your schedulers of problems.

Conflicts are created when two orders are booked that require the same resource at the same time. The conflict checking capability also extends to equipment that has been taken out of service for repair or scheduled maintenance and personnel who are unavailable due to vacation time, sick days, holidays, and or work shift rules. You can choose to override a conflict and resolve it later or you can configure the system so that conflicts must be resolved before an order can be confirmed.

## Book an Inquiry in a Few Seconds by Using Quick Holds

Quick holds allow you to block out time for multiple resources without requiring you to enter any detail about the booking – it merely holds the time open until your customer confirms the order. This saves time while you are on the phone with a customer and lets you to fill in all the necessary details about the order at your convenience. Once a quick hold is on the Schedule Book, you can easily convert it into a transmission order.

## Required Modules

Enterprise Workflow Management Core System • Enterprise Scheduling

## Related Options

Enterprise MetaVault® Library • Enterprise Service Maintenance • Enterprise Bidding

**Corporate Headquarters**  
**Xytech Systems Corporation**  
 15451 San Fernando Mission Blvd.  
 Suite 400  
 Mission Hills, CA 91345 USA  
 Tel +1 818-698-4900  
 Fax +1 818-698-4901



**Europe, Middle East, Africa**  
**Xytech Systems Ltd.**  
 Gainsborough House  
 81 Oxford Street  
 London, W1D 2EU UK  
 Tel +44 (0)20-7903-5170  
 Fax +44 (0)20-7903-5169

©2010 Xytech Systems Corporation. All rights reserved. All products and companies mentioned are trademarks of their respective owners. This document is for informational purposes only. XYTECH SYSTEMS MAKES NO WARRANTIES, EXPRESS OR IMPLIED, IN THIS SUMMARY.